

Rider oświetleniowy Sali kameralnej Narodowego Centrum Polskiej Piosenki w Opolu

Oświetlenie :

Lista sprzętu oświetleniowego :

12 x Chauvet Intimidator Hybrid 140 SR

17 x Chauvet Intimidator Trio

11 x Chauvet Rogue R1 Beam

5 x Chauvet Rogue R1 FX-B

4 x SGM X-5

12 x Chauvet Colordash Par-Hex 7

6 x Robert Juliat PC Lutin 1kW

4 x Blinder 4x650 DWE

2 x Pea Soup Phantom Hazer

2 x Pea Soup Wentylator

1 x Grand MA 2 Light

Cały system oświetleniowy jest zamontowany zgodnie z rysunkami poniżej.

Nie ma możliwości zmiany rozmieszczenia poszczególnych urządzeń i opraw konwencjonalnych.

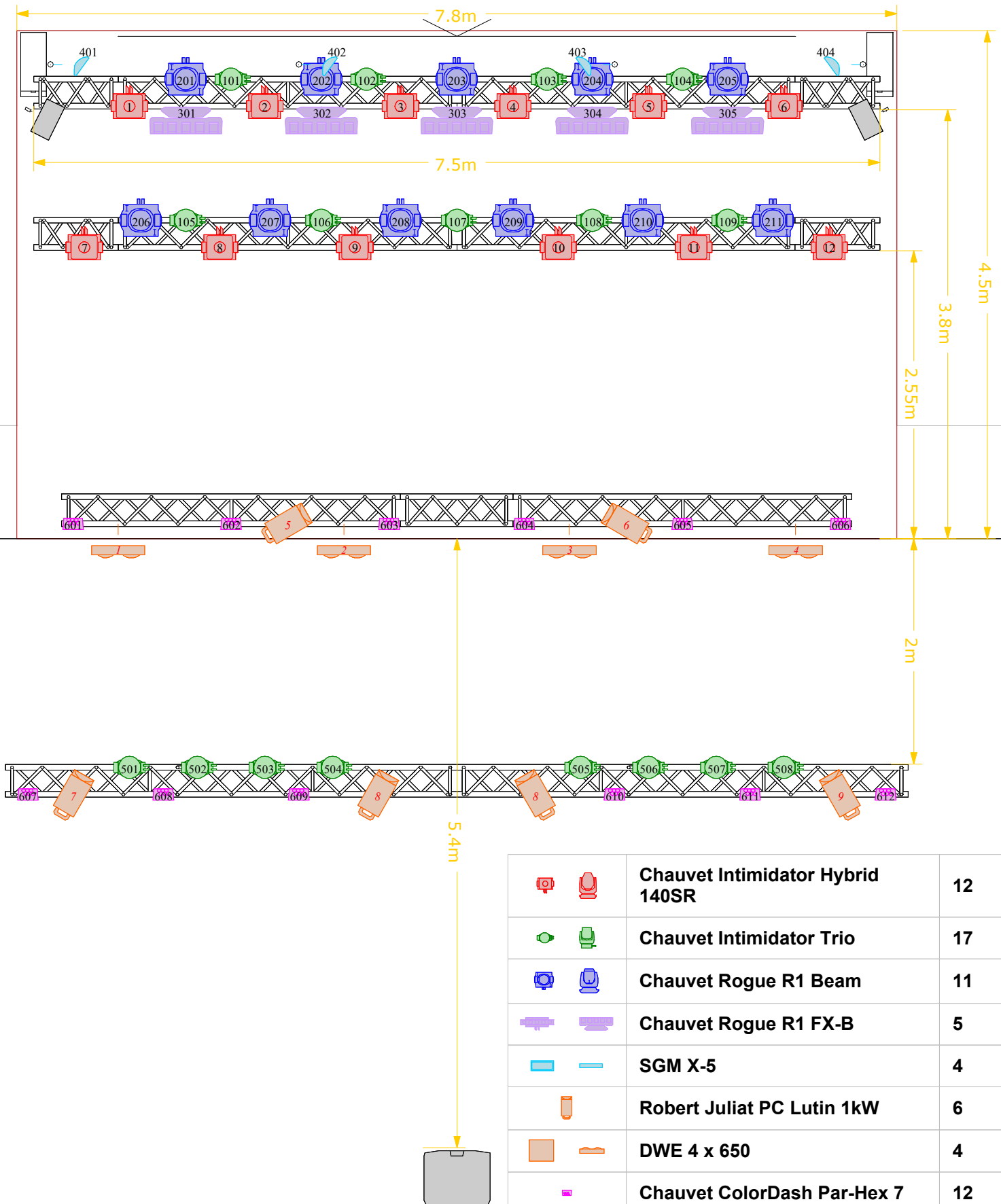
Scena i podesty :

Scena o wymiarach 7,8m x 4,5m x 0,6m (szerokość, głębokość, wysokość) i wysokości okna sceny 3,3m (2,8m od sceny do dolnej krawędzi urządzeń). Do dyspozycji jest 7 podestów 2m x 1m łączonych w dowolnej konfiguracji na nogach z kołami (wysokość 20 cm). Czarne nietransparentne okotowanie z tyłu i dwóch boków.

Projektor i ekran :

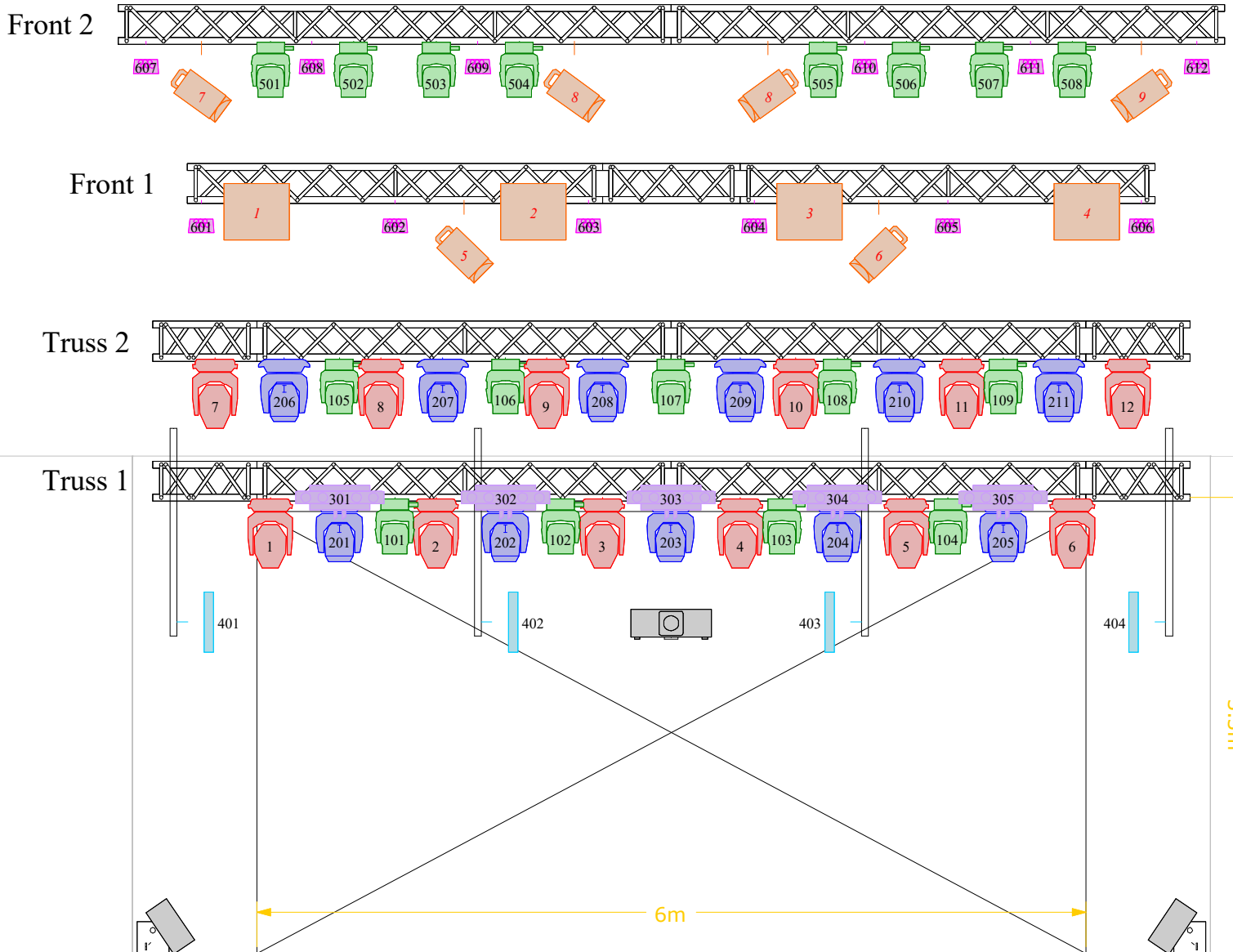
Do dyspozycji jest projektor EPSON EB – G7905U1 z wyprowadzonym kablem HDMI i opuszczanym ekranem roletowym o szerokości 6m znajdującym się w tylnej części sceny. Opcjonalnie do projektora można podłączyć mediaserver CatalystPM 4.40 sterowany z konsoli oświetleniowej.

Plan View



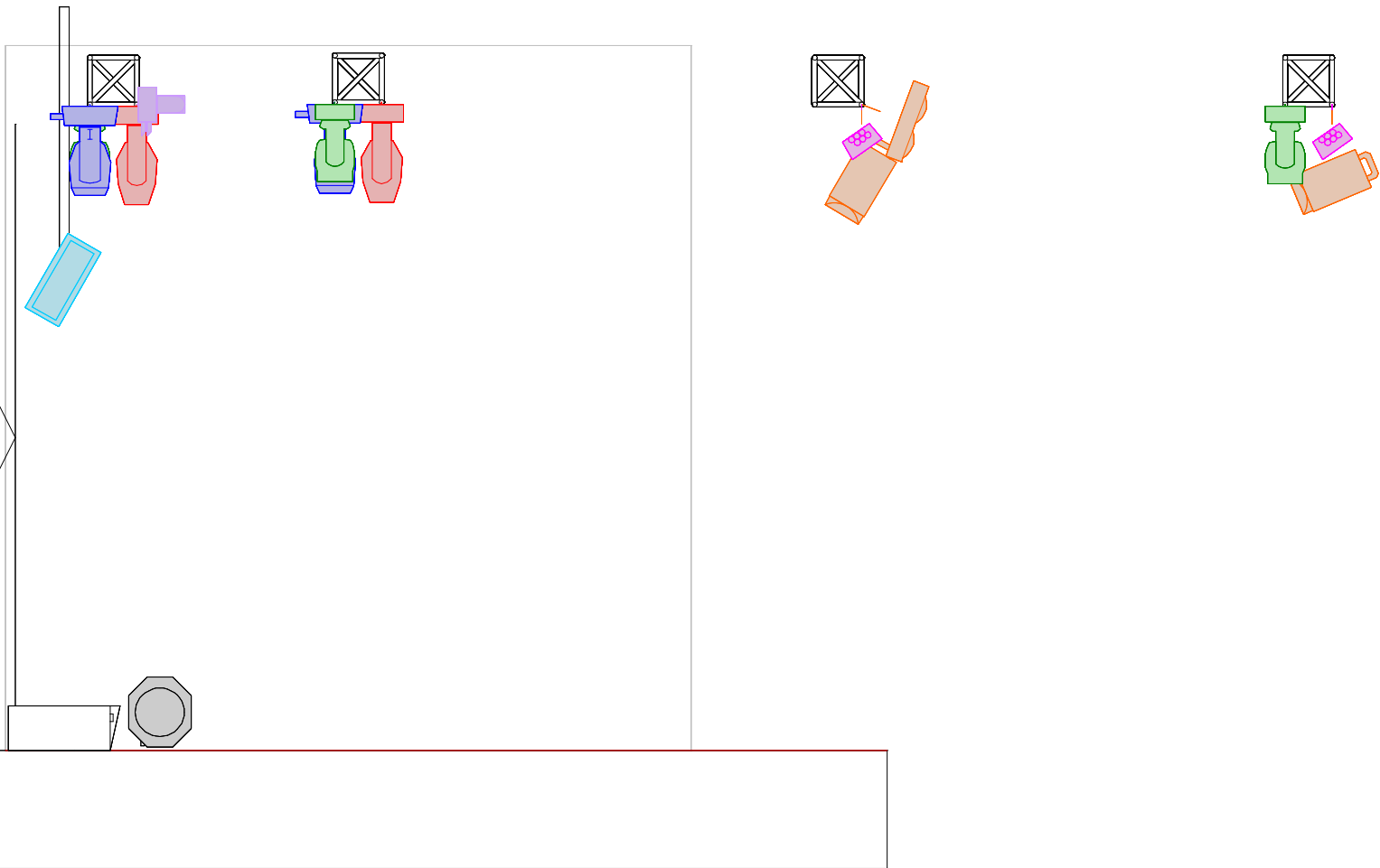
		Chauvet Intimidator Hybrid 140SR	12
		Chauvet Intimidator Trio	17
		Chauvet Rogue R1 Beam	11
		Chauvet Rogue R1 FX-B	5
		SGM X-5	4
		Robert Juliat PC Lutin 1kW	6
		DWE 4 x 650	4
		Chauvet ColorDash Par-Hex 7	12
		EPSON EB-G7905U	1
		Pea Soup Phantom Hazer	2
		Fan	2









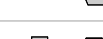


Front View



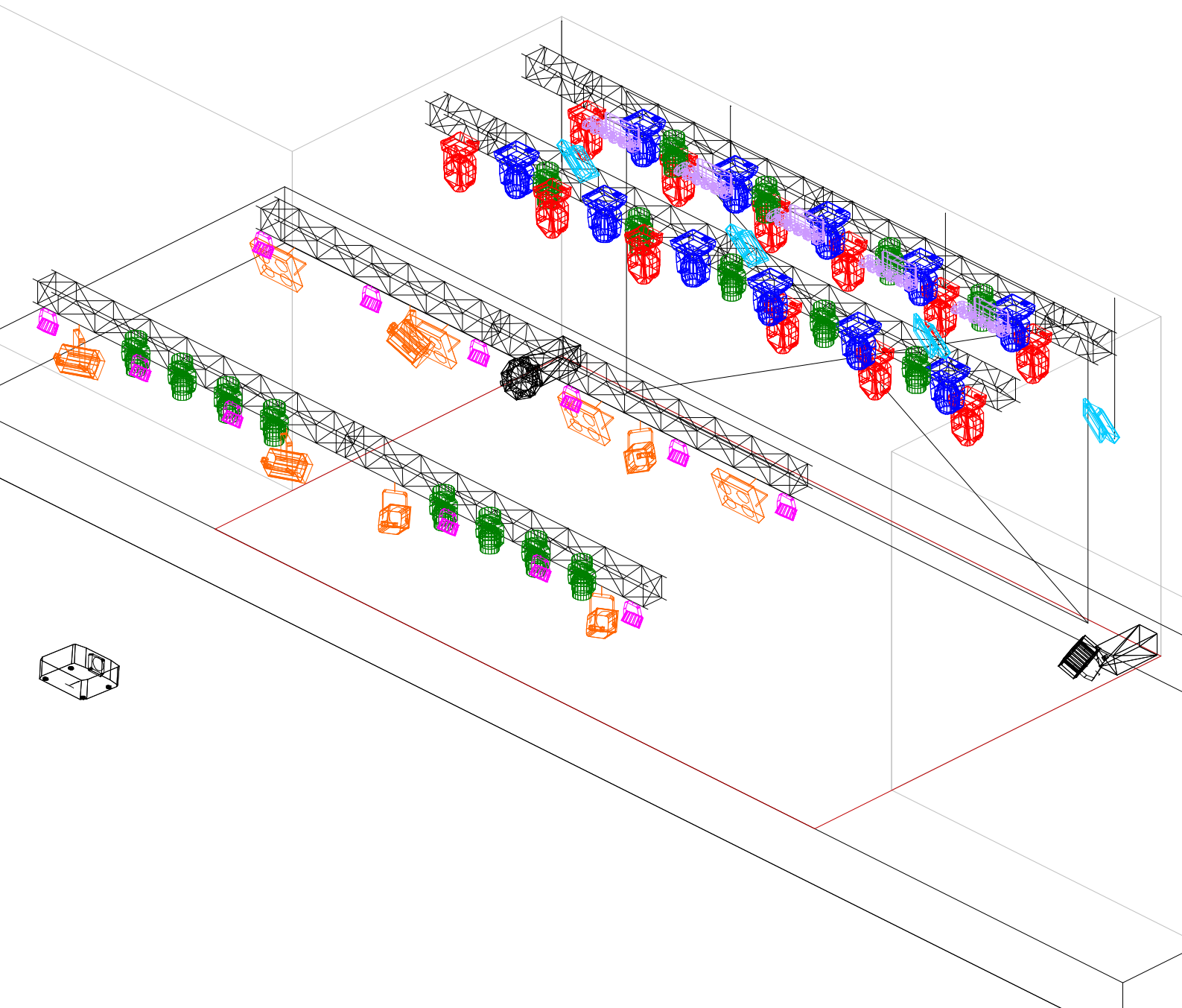
		Chauvet Intimidator Hybrid 140SR	12
		Chauvet Intimidator Trio	17
		Chauvet Rogue R1 Beam	11
		Chauvet Rogue R1 FX-B	5
		SGM X-5	4
		Robert Juliat PC Lutin 1kW	6
		DWE 4 x 650	4
		Chauvet ColorDash Par-Hex 7	12
		EPSON EB-G7905U	1
		Pea Soup Phantom Hazer	2
		Fan	2












Left Side View



	Chauvet Intimidator Hybrid 140SR	12
	Chauvet Intimidator Trio	17
	Chauvet Rogue R1 Beam	11
	Chauvet Rogue R1 FX-B	5
	SGM X-5	4
	Robert Juliat PC Lutin 1kW	6
	DWE 4 x 650	4
	Chauvet ColorDash Par-Hex 7	12
	EPSON EB-G7905U	1
	Pea Soup Phantom Hazer	2
	Fan	2

Isometric View



	Chauvet Intimidator Hybrid 140SR	12
	Chauvet Intimidator Trio	17
	Chauvet Rogue R1 Beam	11
	Chauvet Rogue R1 FX-B	5
	SGM X-5	4
	Robert Juliat PC Lutin 1kW	6
	DWE 4 x 650	4
	Chauvet ColorDash Par-Hex 7	12
	EPSON EB-G7905U	1
	Pea Soup Phantom Hazer	2
	Fan	2

Patch List

ID Ch	ID Fix	Fixture	Mode	Patch
	1	Chauvet Intimidator Hybrid 140 SR	19 ch	1.001
	2	Chauvet Intimidator Hybrid 140 SR		1.020
	3	Chauvet Intimidator Hybrid 140 SR		1.039
	4	Chauvet Intimidator Hybrid 140 SR		1.058
	5	Chauvet Intimidator Hybrid 140 SR		1.077
	6	Chauvet Intimidator Hybrid 140 SR		1.096
	7	Chauvet Intimidator Hybrid 140 SR		2.001
	8	Chauvet Intimidator Hybrid 140 SR		2.020
	9	Chauvet Intimidator Hybrid 140 SR		2.039
	10	Chauvet Intimidator Hybrid 140 SR		2.058
	11	Chauvet Intimidator Hybrid 140 SR		2.077
	12	Chauvet Intimidator Hybrid 140 SR		2.096
	101	Chauvet Intimidator Trio	30 ch	1.115
	102	Chauvet Intimidator Trio		1.145
	103	Chauvet Intimidator Trio		1.175
	104	Chauvet Intimidator Trio		1.205
	105	Chauvet Intimidator Trio		2.115
	106	Chauvet Intimidator Trio		2.145
	107	Chauvet Intimidator Trio		2.175
	108	Chauvet Intimidator Trio		2.205
	109	Chauvet Intimidator Trio		2.235
	201	Chauvet Rogue R1 Beam	19 ch	1.265
	202	Chauvet Rogue R1 Beam		1.284
	203	Chauvet Rogue R1 Beam		1.303
	204	Chauvet Rogue R1 Beam		1.322
	205	Chauvet Rogue R1 Beam		1.341
	206	Chauvet Rogue R1 Beam		2.265
	207	Chauvet Rogue R1 Beam		2.284
	208	Chauvet Rogue R1 Beam		2.303
	209	Chauvet Rogue R1 Beam		2.322
	210	Chauvet Rogue R1 Beam		2.341
	211	Chauvet Rogue R1 Beam		2.360
	301	Chauvet Rogue R1 FX - B	47 ch Single Tour	3.001
	302	Chauvet Rogue R1 FX - B		3.048
	303	Chauvet Rogue R1 FX - B		3.095
	304	Chauvet Rogue R1 FX - B		3.142
	305	Chauvet Rogue R1 FX - B		3.189
	401	SGM X-5	7 ch	3.471
	402	SGM X-5		3.478
	403	SGM X-5		3.485
	404	SGM X-5		3.492
	501	Chauvet Intimidator Trio	30 ch	4.001
	502	Chauvet Intimidator Trio		4.031
	503	Chauvet Intimidator Trio		4.061
	504	Chauvet Intimidator Trio		4.091
	505	Chauvet Intimidator Trio		4.121
	506	Chauvet Intimidator Trio		4.151
	507	Chauvet Intimidator Trio		4.181
	508	Chauvet Intimidator Trio		4.211

	601	Chauvet ColorDash Par-Hex 7	13 ch (LEE 216)	1.401
	602	Chauvet ColorDash Par-Hex 7		1.414
	603	Chauvet ColorDash Par-Hex 7		1.427
	604	Chauvet ColorDash Par-Hex 7		1.440
	605	Chauvet ColorDash Par-Hex 7		1.453
	606	Chauvet ColorDash Par-Hex 7		1.466
	607	Chauvet ColorDash Par-Hex 7		4.401
	608	Chauvet ColorDash Par-Hex 7		4.414
	609	Chauvet ColorDash Par-Hex 7		4.427
	610	Chauvet ColorDash Par-Hex 7		4.440
	611	Chauvet ColorDash Par-Hex 7		4.453
	612	Chauvet ColorDash Par-Hex 7		4.466
1		DWE 4x650		1.481
2		DWE 4x650		1.482
3		DWE 4x650		1.483
4		DWE 4x650		1.484
5		PC RJ Lutin 1kW		1.486
6		PC RJ Lutin 1kW		1.487
7		PC RJ Lutin 1kW		1.488
8		PC RJ Lutin 1kW		1.489
8		PC RJ Lutin 1kW		1.489
9		PC RJ Lutin 1kW		1.490
101		Hazer L		1.501
102		Fan L		1.502
103		Hazer R		1.503
104		Fan R		1.504