

# **Rider oświetleniowy i specyfikacja techniczna ekranu led w Sali kameralnej Narodowego Centrum Polskiej Piosenki w Opolu**

## **Oświetlenie :**

Lista sprzętu oświetleniowego :

12 x Chauvet Intimidator Hybrid 140 SR

19 x Chauvet Intimidator Trio

12 x Chauvet Rogue R1 Beam

8 x Chauvet Rogue R1 FX-B

4 x SGM X-5

4 x Robert Juliat PC Lutin 1kW

4 x 4x650 DWE

10 x SunStrip Active DMX

19 x Chauvet Colordash Par-Hex 7

2 x Pea Soup Phantom Hazer

2 x Pea Soup Fan

1 x Grand MA 2 Light

Cały system oświetleniowy jest zamontowany zgodnie z rysunkami poniżej.

**Nie ma możliwości zmiany rozmieszczenia poszczególnych urządzeń i opraw konwencjonalnych !**

**Z uwagi na bardzo częste użycie ekranu led, urządzenia oświetleniowe ID Fix : 302,303,401-404,707-712, 801-810 są zdemontowane i są dostępne jako opcja.**

## **Scena i podesty :**

Scena o wymiarach 8,2m x 4,5m x 0,6m (szerokość, głębokość, wysokość) i wysokości okna sceny 3,5m (2,9m od sceny do dolnej krawędzi urządzeń). Do dyspozycji jest 7 podestów 2m x 1m i 1 2m x 0,5m łączone w dowolnej konfiguracji na nogach z kołami (wysokość 25 cm). Czarne nietransparentne okotowanie z tyłu i dwóch boków.

## **Horyzonty :**

Za tylnym mostem na wysokości 3,15 m od powierzchni sceny rozpięta jest linka stalowa do podwieszania horyzontów.

Jako opcja dostępne są cylindryczne filary z materiału „europalms” (zdjęcie poniżej), podświetlane parami led ID Fix. 701 – 712.



## **Projektor i ekran :**

Do dyspozycji jest projektor EPSON EB – G7905U1 z wyprowadzonym kablem HDMI na stanowisku realizacyjnym i opuszczanym ekranem roletowym o szerokości 6m znajdującym się w tylnej części sceny, w odległości 1.35 m od tylnej ściany.

## **Ekran Led :**

Ekran jest zamontowany na stałe na tylnej ścianie, centralnie w oknie sceny 30 cm nad jej powierzchnią. Poniżej parametry ekranu :

- pixel pitch : P2,5
- wymiary ekranu : 5,44m x 3,04m (szerokość, wysokość)
- rozdzielczość fizyczna ekranu : 2176 x 1216
- powierzchnia ekranu : 16,54 m<sup>2</sup>
- przekątna ekranu : 245 cali
- proporcja ekranu : 16 : 8,94
- paleta kolorów : 24-bitowa
- kąt widzenia (pion/poziom) : 140°/140°
- częstotliwość odświeżania : 3840 Hz
- wejście sygnału : HDMI (30 lub 60 Hz)

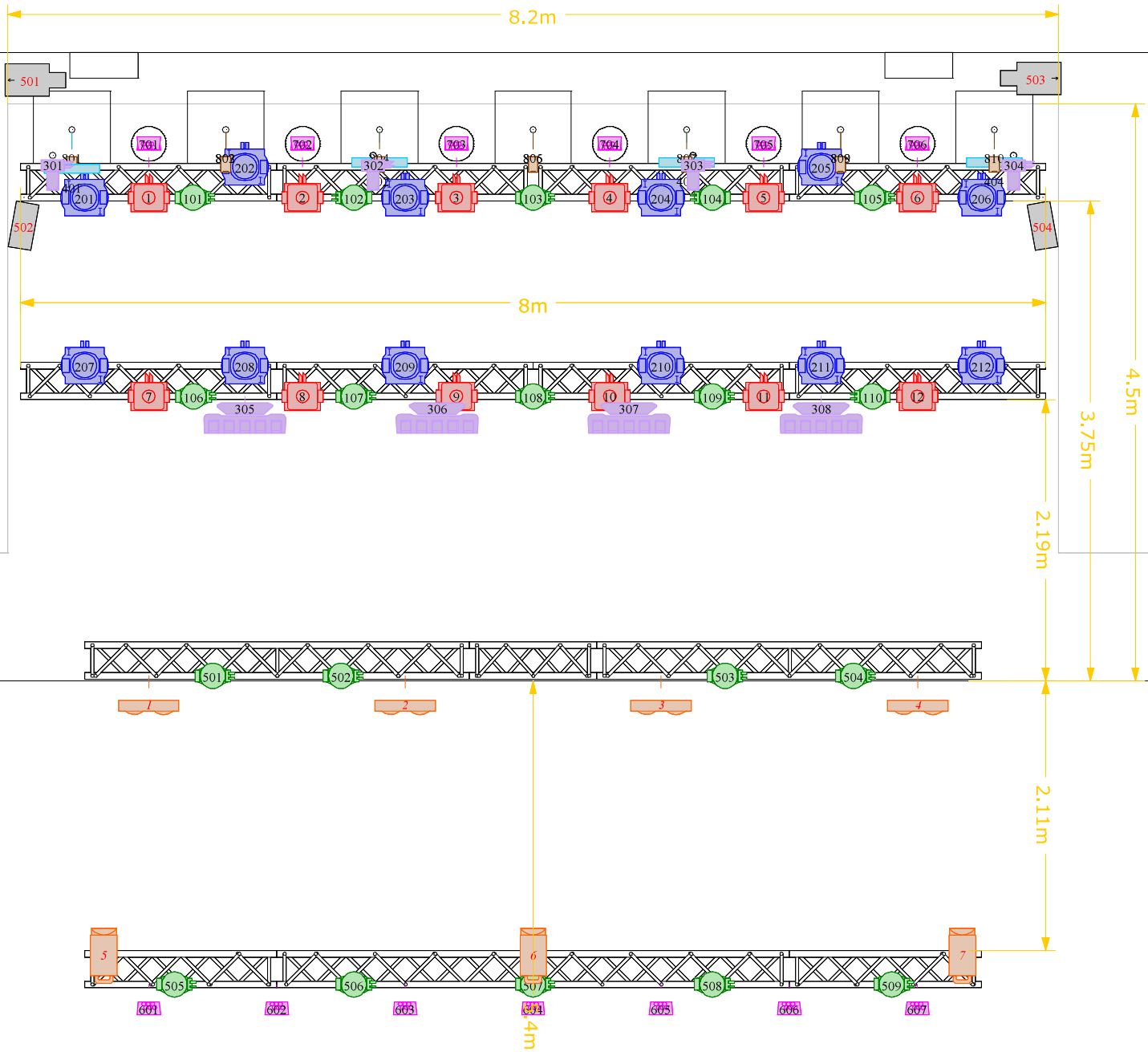
Kontakt :

Arkadiusz Arnold Balaryn

tel : 530 922 882

e-mail : [a.balaryn@ncpp.opole.pl](mailto:a.balaryn@ncpp.opole.pl)

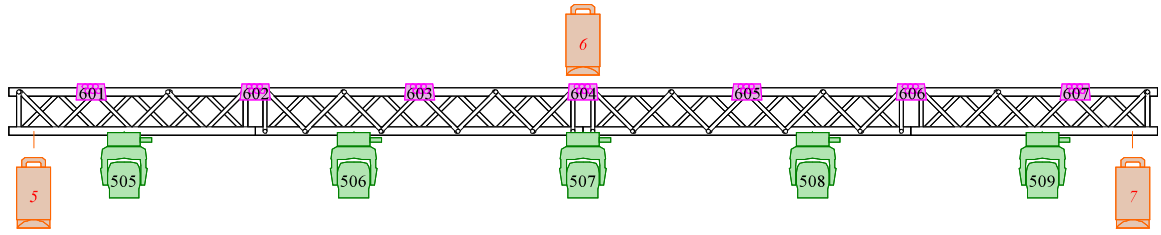
# Plan View



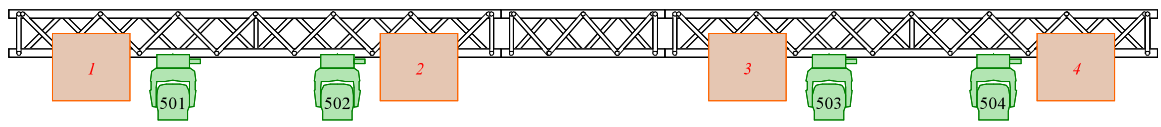
		<b>Chauvet Intimidator Hybrid 140SR</b>	<b>12</b>
		<b>Chauvet Intimidator Trio</b>	<b>19</b>
		<b>Chauvet Rogue R1 Beam</b>	<b>12</b>
		<b>Chauvet Rogue R1 FX-B</b>	<b>8</b>
		<b>SGM X-5</b>	<b>4</b>
		<b>Robert Juliat PC Lutin 1kW</b>	<b>3</b>
		<b>DWE 4 x 650</b>	<b>4</b>
		<b>Sunstrip Active Dmx</b>	<b>10</b>
		<b>Chauvet ColorDash Par-Hex 7</b>	<b>19</b>
		<b>PeaSoup Phantom Hazer</b>	<b>2</b>
		<b>Fan</b>	<b>2</b>
		<b>EPSON EB-G7905U</b>	<b>1</b>

# Front View

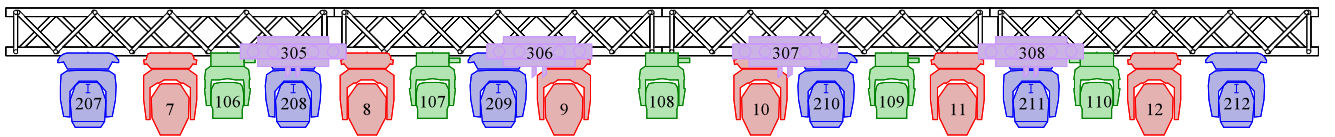
Front 2



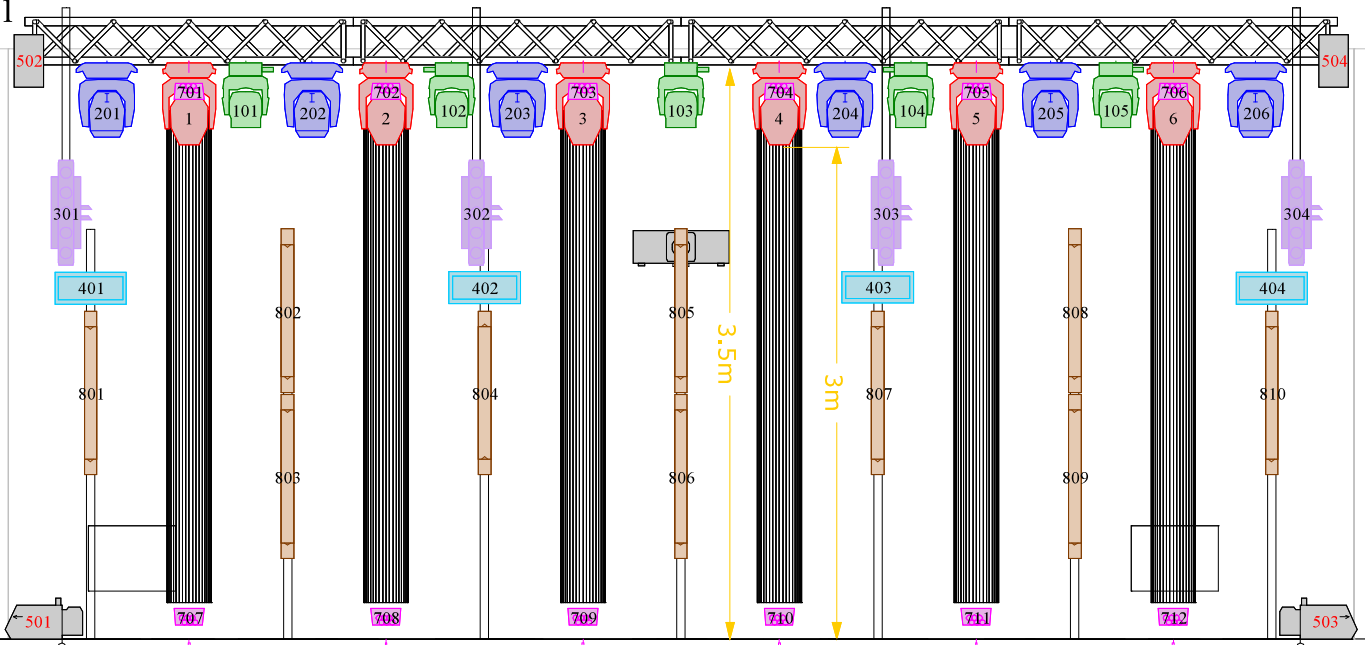
Front 1



Truss 2

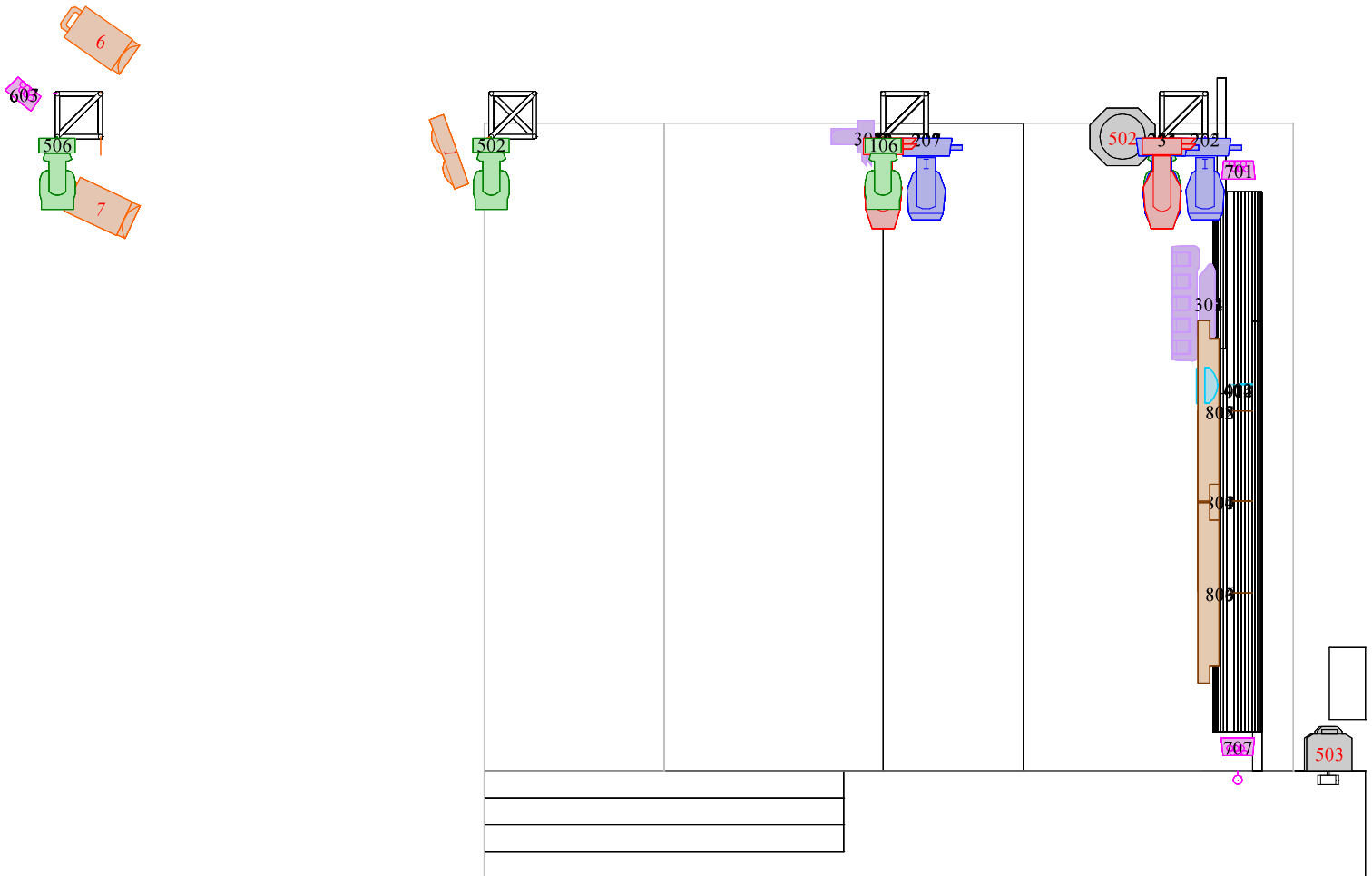




















Truss 1



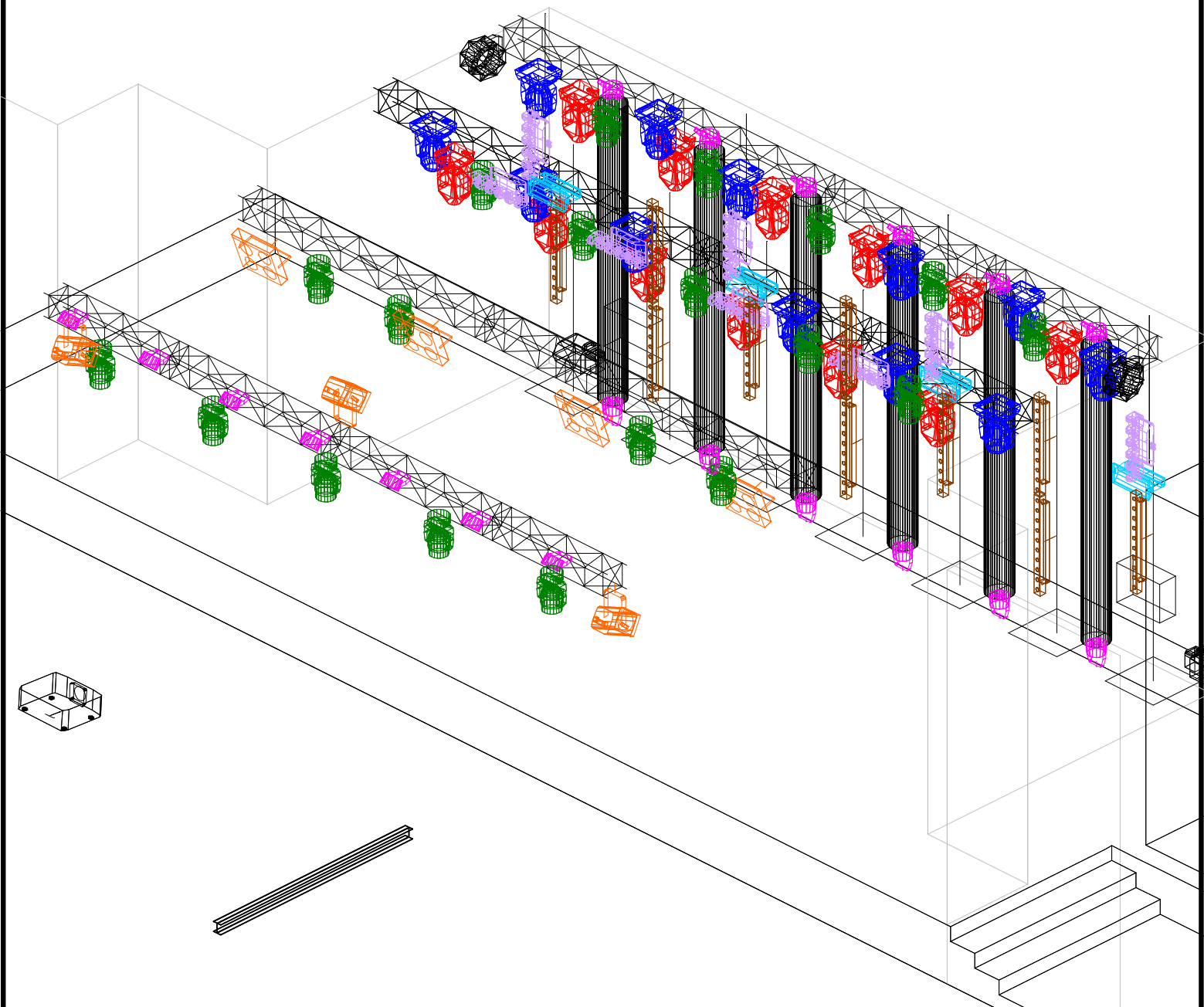
	<b>Chauvet Intimidator Hybrid 140SR</b>	<b>12</b>
	<b>Chauvet Intimidator Trio</b>	<b>19</b>
	<b>Chauvet Rogue R1 Beam</b>	<b>12</b>
	<b>Chauvet Rogue R1 FX-B</b>	<b>8</b>
	<b>SGM X-5</b>	<b>4</b>
	<b>Robert Juliat PC Lutin 1kW</b>	<b>3</b>
	<b>DWE 4 x 650</b>	<b>4</b>
	<b>Sunstrip Active Dmx</b>	<b>10</b>
	<b>Chauvet ColorDash Par-Hex 7</b>	<b>19</b>
	<b>PeaSoup Phantom Hazer</b>	<b>2</b>
	<b>Fan</b>	<b>2</b>
	<b>EPSON EB-G7905U</b>	<b>1</b>











# Left Side View



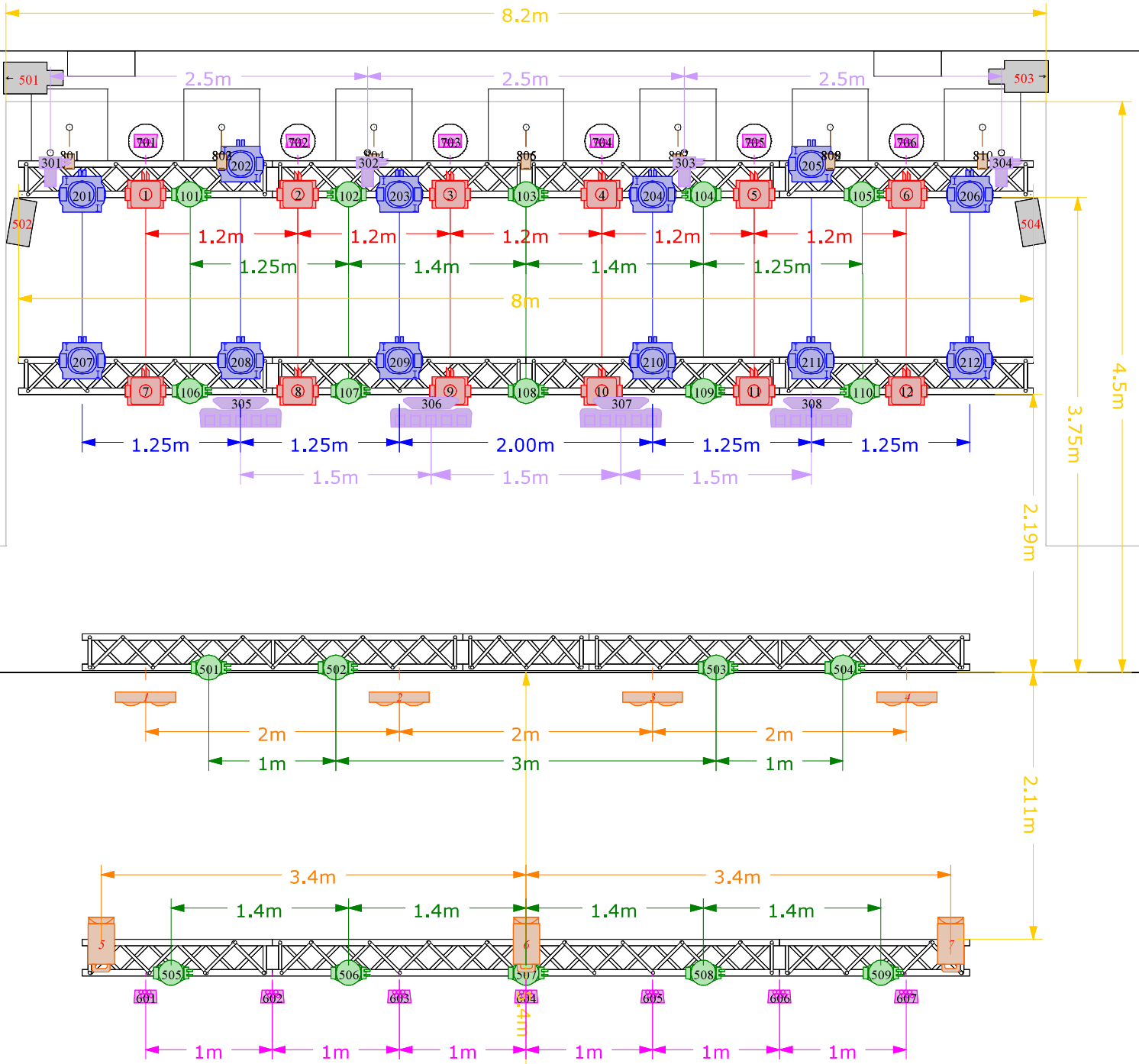
		<b>Chauvet Intimidator Hybrid 140SR 12</b>	
		<b>Chauvet Intimidator Trio 19</b>	
		<b>Chauvet Rogue R1 Beam 12</b>	
		<b>Chauvet Rogue R1 FX-B 8</b>	
		<b>Robert Juliat PC Lutin 1kW 3</b>	
		<b>DWE 4 x 650 4</b>	
		<b>Chauvet ColorDash Par-Hex 7 19</b>	
		<b>PeaSoup Phantom Hazer 2</b>	
		<b>Fan 2</b>	
		<b>EPSON EB-G7905U 1</b>	

# Isometric View



	<b>Chauvet Intimidator Hybrid 140SR</b>	<b>12</b>
	<b>Chauvet Intimidator Trio</b>	<b>19</b>
	<b>Chauvet Rogue R1 Beam</b>	<b>12</b>
	<b>Chauvet Rogue R1 FX-B</b>	<b>8</b>
	<b>Robert Juliat PC Lutin 1kW</b>	<b>3</b>
	<b>DWE 4 x 650</b>	<b>4</b>
	<b>Chauvet ColorDash Par-Hex 7</b>	<b>19</b>
	<b>PeaSoup Phantom Hazer</b>	<b>2</b>
	<b>Fan</b>	<b>2</b>
	<b>EPSON EB-G7905U</b>	<b>1</b>

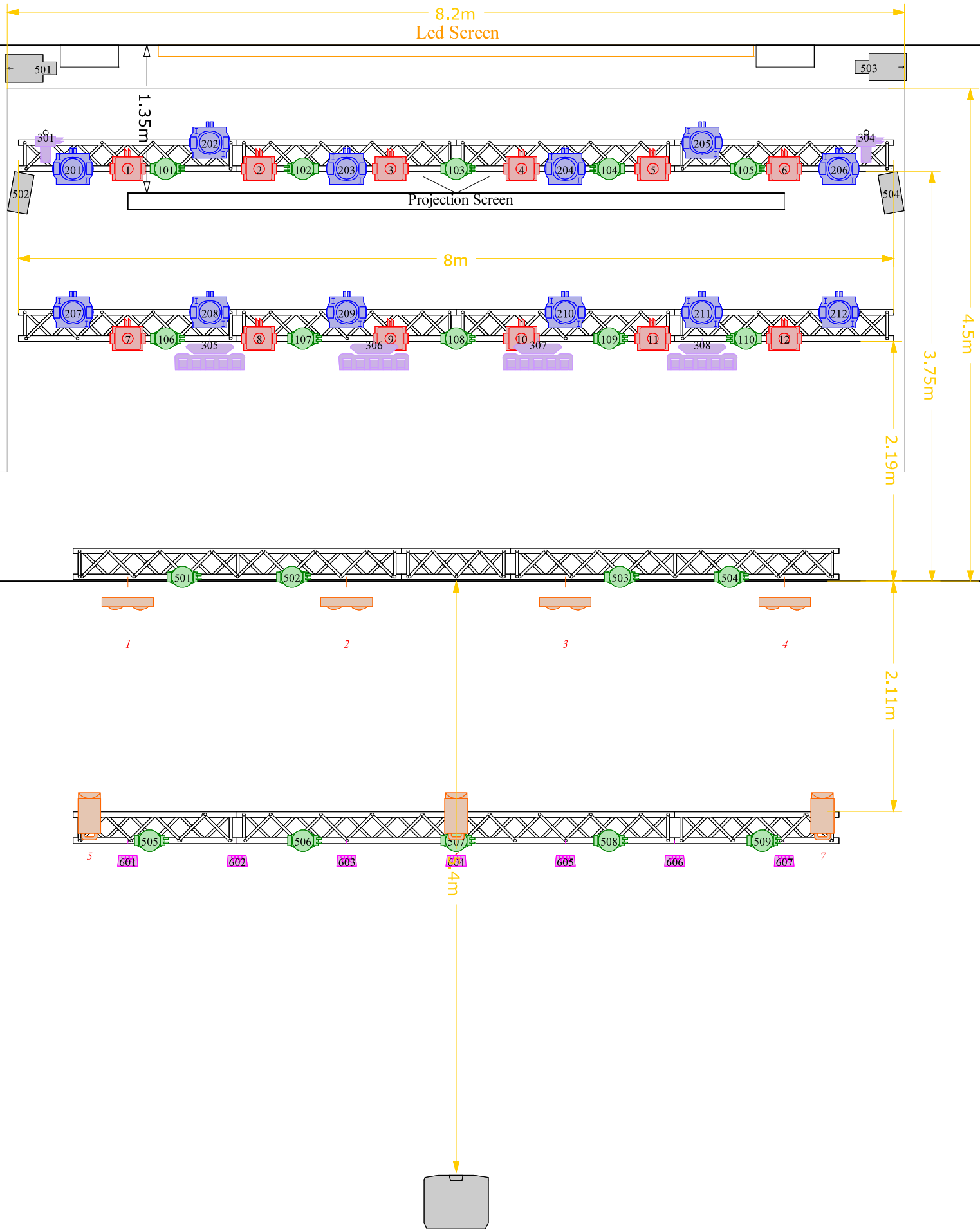
# Dimensions



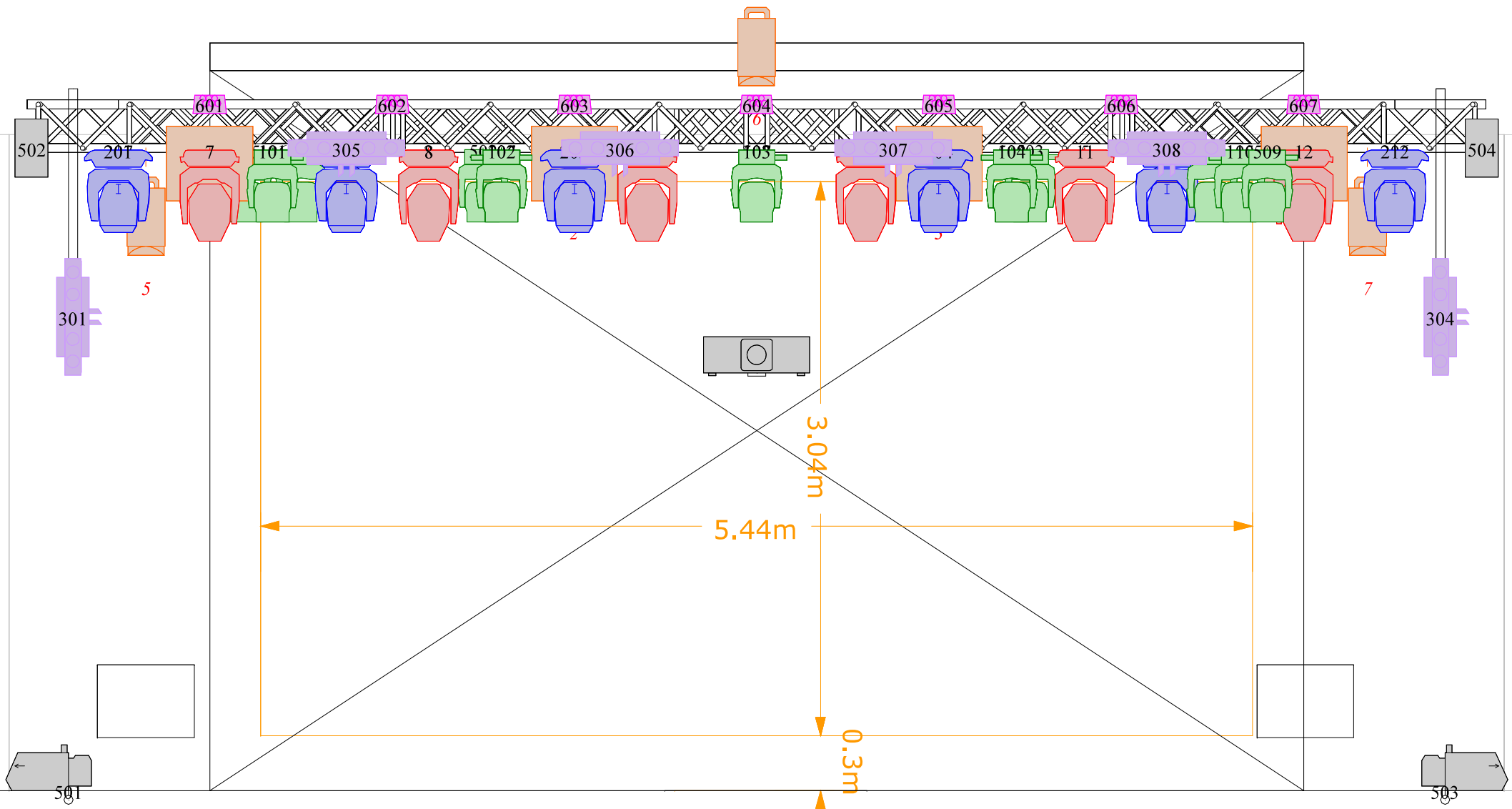
		<b>Chauvet Intimidator Hybrid 140SR</b>	<b>12</b>
		<b>Chauvet Intimidator Trio</b>	<b>19</b>
		<b>Chauvet Rogue R1 Beam</b>	<b>12</b>
		<b>Chauvet Rogue R1 FX-B</b>	<b>8</b>
		<b>Robert Juliat PC Lutin 1kW</b>	<b>3</b>
		<b>DWE 4 x 650</b>	<b>4</b>
		<b>Chauvet ColorDash Par-Hex 7</b>	<b>19</b>
		<b>PeaSoup Phantom Hazer</b>	<b>2</b>
		<b>Fan</b>	<b>2</b>
		<b>EPSON EB-G7905U</b>	<b>1</b>



# Led and Projection screen



# Led and Projection screen



# Patch List

ID Ch	ID Fix	Fixture	Mode	Patch
	1	Chauvet Intimidator Hybrid 140 SR	19 ch	1.001
	2	Chauvet Intimidator Hybrid 140 SR		1.020
	3	Chauvet Intimidator Hybrid 140 SR		1.039
	4	Chauvet Intimidator Hybrid 140 SR		1.058
	5	Chauvet Intimidator Hybrid 140 SR		1.077
	6	Chauvet Intimidator Hybrid 140 SR		1.096
	7	Chauvet Intimidator Hybrid 140 SR		2.001
	8	Chauvet Intimidator Hybrid 140 SR		2.020
	9	Chauvet Intimidator Hybrid 140 SR		2.039
	10	Chauvet Intimidator Hybrid 140 SR		2.058
	11	Chauvet Intimidator Hybrid 140 SR		2.077
	12	Chauvet Intimidator Hybrid 140 SR		2.096
	101	Chauvet Intimidator Trio	30 ch	1.115
	102	Chauvet Intimidator Trio		1.145
	103	Chauvet Intimidator Trio		1.175
	104	Chauvet Intimidator Trio		1.205
	105	Chauvet Intimidator Trio		1.235
	106	Chauvet Intimidator Trio		2.115
	107	Chauvet Intimidator Trio		2.145
	108	Chauvet Intimidator Trio		2.175
	109	Chauvet Intimidator Trio		2.205
	110	Chauvet Intimidator Trio		2.235
	201	Chauvet Rogue R1 Beam	19 ch	1.265
	202	Chauvet Rogue R1 Beam		1.284
	203	Chauvet Rogue R1 Beam		1.303
	204	Chauvet Rogue R1 Beam		1.322
	205	Chauvet Rogue R1 Beam		1.341
	206	Chauvet Rogue R1 Beam		1.360
	207	Chauvet Rogue R1 Beam		2.265
	208	Chauvet Rogue R1 Beam		2.284
	209	Chauvet Rogue R1 Beam		2.303
	210	Chauvet Rogue R1 Beam		2.322
	211	Chauvet Rogue R1 Beam		2.341
	212	Chauvet Rogue R1 Beam		2.360
	301	Chauvet Rogue R1 FX - B	47 ch Single Tour	3.001
	302	Chauvet Rogue R1 FX - B		3.048
	303	Chauvet Rogue R1 FX - B		3.095
	304	Chauvet Rogue R1 FX - B		3.142
	305	Chauvet Rogue R1 FX - B		3.189
	306	Chauvet Rogue R1 FX - B		3.236
	307	Chauvet Rogue R1 FX - B		3.283
	308	Chauvet Rogue R1 FX - B		3.330
	401	SGM X-5	7 ch	4.427
	402	SGM X-5		4.434
	403	SGM X-5		4.441
	404	SGM X-5		4.448

	501	Chauvet Intimidator Trio	30 ch	4.001
	502	Chauvet Intimidator Trio		4.031
	503	Chauvet Intimidator Trio		4.061
	504	Chauvet Intimidator Trio		4.091
	505	Chauvet Intimidator Trio		4.121
	506	Chauvet Intimidator Trio		4.151
	507	Chauvet Intimidator Trio		4.181
	508	Chauvet Intimidator Trio		4.211
	509	Chauvet Intimidator Trio		4.241
	601	Chauvet ColorDash Par-Hex 7	8 ch (LEE 216)	4.271
	602	Chauvet ColorDash Par-Hex 7		4.279
	603	Chauvet ColorDash Par-Hex 7		4.287
	604	Chauvet ColorDash Par-Hex 7		4.295
	605	Chauvet ColorDash Par-Hex 7		4.303
	606	Chauvet ColorDash Par-Hex 7		4.311
	607	Chauvet ColorDash Par-Hex 7		4.319
	701	Chauvet ColorDash Par-Hex 7	8 ch	1.379
	702	Chauvet ColorDash Par-Hex 7		1.387
	703	Chauvet ColorDash Par-Hex 7		1.395
	704	Chauvet ColorDash Par-Hex 7		1.403
	705	Chauvet ColorDash Par-Hex 7		1.411
	706	Chauvet ColorDash Par-Hex 7		1.419
	707	Chauvet ColorDash Par-Hex 8		1.427
	708	Chauvet ColorDash Par-Hex 9		1.435
	709	Chauvet ColorDash Par-Hex 10		1.443
	710	Chauvet ColorDash Par-Hex 11		1.451
	711	Chauvet ColorDash Par-Hex 12		1.459
	712	Chauvet ColorDash Par-Hex 13		1.467
	801	Sunstrip Active DMX	10 ch	4.327
	802	Sunstrip Active DMX		4.337
	803	Sunstrip Active DMX		4.347
	804	Sunstrip Active DMX		4.357
	805	Sunstrip Active DMX		4.367
	806	Sunstrip Active DMX		4.377
	807	Sunstrip Active DMX		4.387
	808	Sunstrip Active DMX		4.397
	809	Sunstrip Active DMX		4.407
	810	Sunstrip Active DMX		4.417
	1	DWE 4x650		1.481
	2	DWE 4x650		1.482
	3	DWE 4x650		1.483
	4	DWE 4x650		1.484
	5	PC RJ Lutin 1kW		1.485
	6	PC RJ Lutin 1kW		1.486
	7	PC RJ Lutin 1kW		1.487
101		Hazer L		1.501
102		Fan L		1.502
103		Hazer R		1.503
104		Fan R		1.504